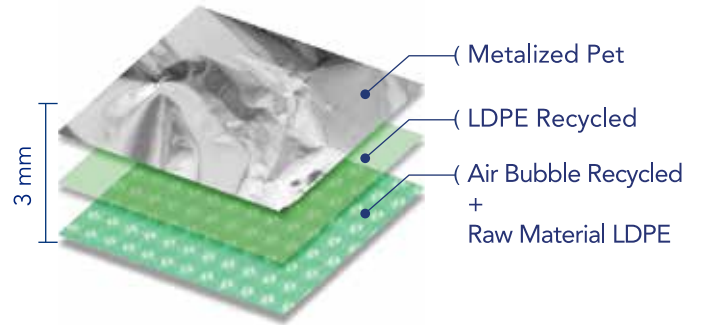
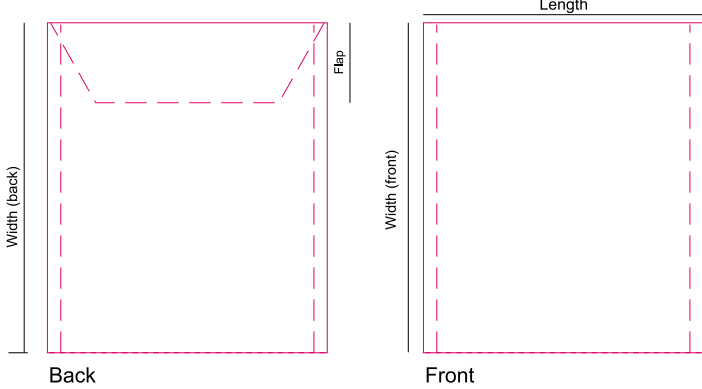
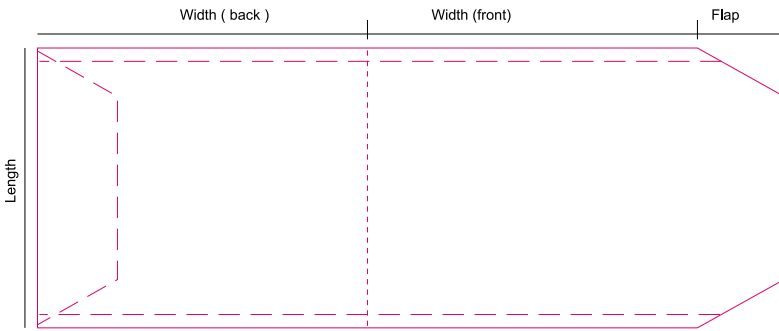


TECNICAL DATASHEET METALIZED ECOLOGIC MAILER

made from 80% recycled plastics

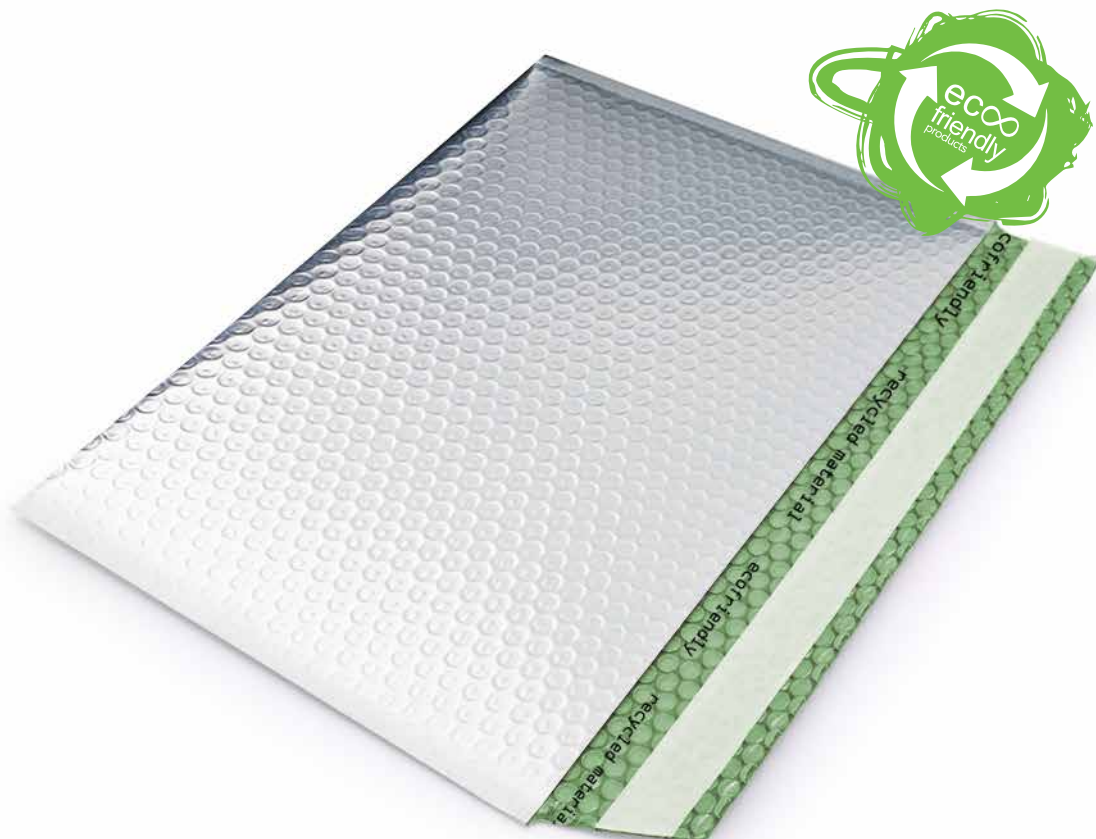


Composition (GSM)

Metalized PET	16 GSM
LDPE Recycled	32 GSM
Glue	2 GSM
LDPE/ PP/ PET Air bubble recycled + Raw Material LDPE	120 GSM 20 GSM
Total	190 GSM

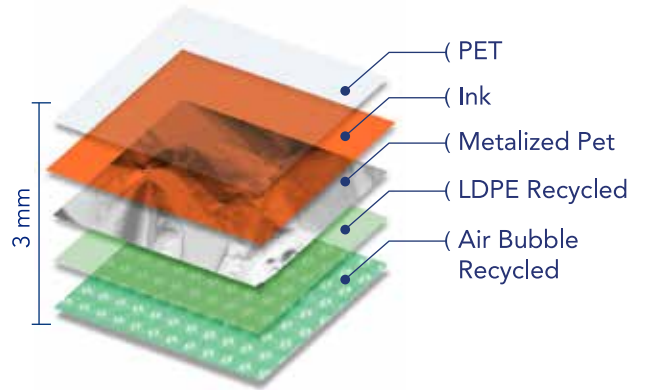
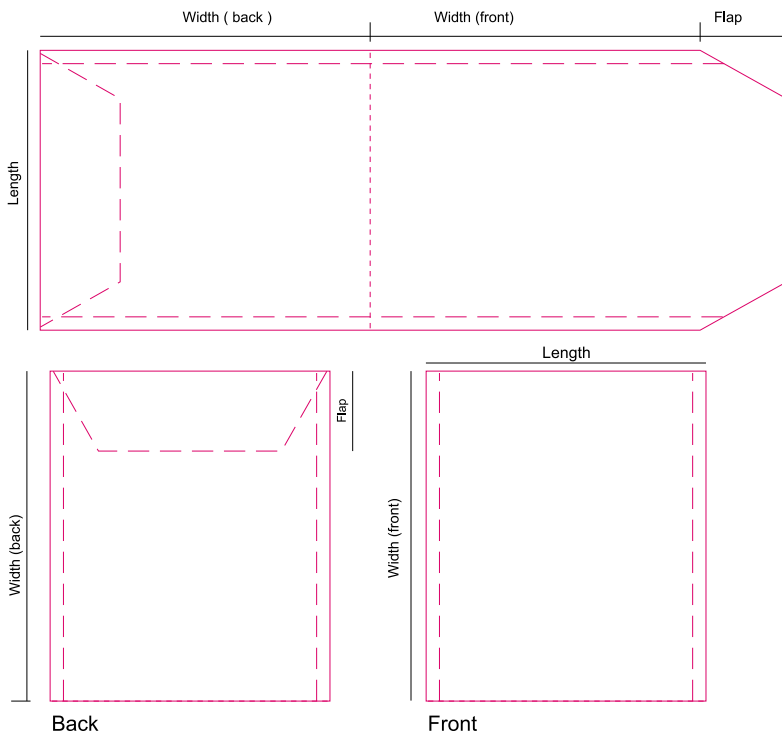
Extras:

Hot Melt (If Existing) Protected with peelable paper	PU BASED
Buton (If Existing)	Nylon



TECNICAL DATASHEET METALIZED COLOR ECOLOGIC MAILER

made from 80% recycled plastics



Composition (GSM)

Raw Material PET	16 GSM
Ink	4 GSM
Metalized PET	16 GSM
LDPE Recycled	32 GSM
Glue	4 GSM
LDPE/ PP/ PET Air bubble recycled	118 GSM
Total	190 GSM

Extras:

Hot Melt (If Existing) Protected with peelable paper	PU BASED
Buton (If Existing)	Nylon

